

AutoGR-Toolkit v.3.3 :: Forth-IMS ::

Tools ?

Welcome to the AutoGR Toolkit!

AutoGR Toolkit is a set of small softwares created to automate and speed-up

GGrab
It allows you to save a WMS image of the area of interest.

AutoGR-Sift
automatically produces a list of points to rectify (in real world coordinates, if available) a given set of images.

GeoRef Filtering
AutoGR-SIFT usually produces thousands of points in few seconds and this script lets you reduce this number to a more manageable one.

GeoTiff Converter
Converts GeoTIFFs in several other formats (including regular tif with world file)

Photogrammetry Tools
Allows you to get X,Y and Z coordinates from any point on earth and produces GroundControlPoints for VisualSFM, sfm_georef and Agisoft Photoscan!

Welcome to AutoGR-Toolkit. Have fun!

- GGrab
- AutoGR-Sift
- GeoRef Filtering
- GeoTiff Converter
- Photogrammetry

Ανάπτυξη Ελεύθερου Λογισμικού

AutoGR-Toolkit 3.3 – <http://www.ims.forth.gr/autogr>

AutoGR-Toolkit v.3.3 :: GGrab ::

File ?

Define your area of interest here [GBoundary]

or just enter upper-left and lower-right coordinates below

NW-Lat	NW-Long	SE-Lat	SE-Long
39.401638	22.76496	39.393274	22.77574

Preview boundaries

Distance for entered points: 0.929 x 0.929 Km

Google Map preview (Internet needed) - Make sure that NW corner is at the TopLeft

Zoom level: 80

File Name: C:\Users\Giamsung\D

Choose the output coordinate system (EPSG): 4326-GCS_WGS_1984

Processing output

```

STEP by STEP
1. Define the coordinate boundaries and Preview
2. Choose the Data Source
3. Set Zoom level and File Name
4. Choose a coordinate system for the output
5. DOWNLOAD!!

```

Start downloading

WARNING: the use of WMS imagery is controlled by the provider and it is to be considered for personal use only. For reproduction rights and policies of use please refer to provider's sites.

AutoGR-Toolkit v.3.3 :: AutoGR-SIFT ::

File ?

First image (base image)

ROMEsample01.jpg

Select Image 1

Image/s to be rectified

ROMEsample02.jpg

Select Image 2

Rotation: unchanged

Automatic image Warping

Projection: not set

ASIFT - Flann (predifined) [64bit]

Select the output folder: Browse

Accept and Start processing

AutoGR-Toolkit :: 3D Matching

3D MATCHING

Converts the 2D matching in 3D GCP (this function is still experimental)

Choose the processing folder: browse

input coordinate format (EPSG number): []

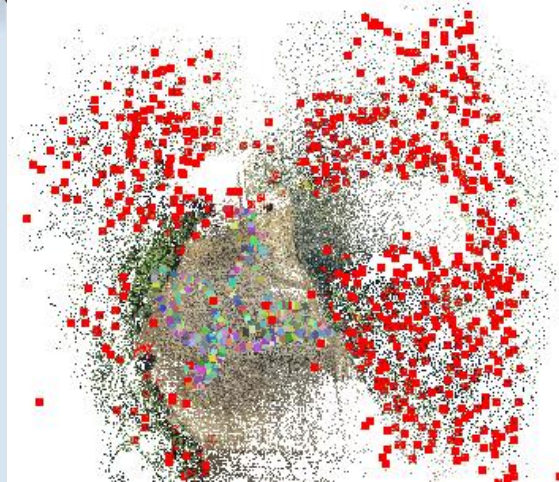
output coordinate format (EPSG number): 3857

Learn more about EPSG: EPSG.io

Altitude values provider: Google API

Required GCPs: 20

Run



Πρώθηση Ελεύθερου Λογισμικού



Το Λογισμικό που είναι γραμμένο σε γλώσσα Python είναι ελεύθερα προσβάσιμο σε όλους και μέχρι σήμερα το έχουν κατεβάσει πάνω από 1000 χρήστες από όλο τον κόσμο.

Map of current downloads based on the IP address of user's computers

ArchaeoLandscapes Europe 5 Years of European Collaboration

Sensing the Past New Approaches to European Landscapes

Dr. Apostolos Sarris

GeoSat ReSeArch Lab

(Lab of Geophysical – Satellite Remote Sensing and Archaeo-environment)

Institute for Mediterranean Studies

Foundation for Research and Technology, Hellas (F.O.R.T.H.)

asaris@ret.forthnet.gr



Culture

"Διακρατικές συνεργασίες των ελληνικών φορέων πολιτιστικής κληρονομιάς- Πρόγραμμα Δημιουργική Ευρώπη"

Διεύθυνση Διεθνών Σχέσεων και Ευρωπαϊκής Ένωσης του ΥΠΟΠΑΙΘ

Νομισματικό Μουσείο, Αθήνα. 29 Απριλίου 2015.